



SIMON

ASSISTED MOBILITY
FOR OLDER AND IMPAIRED USERS



Why SIMON?



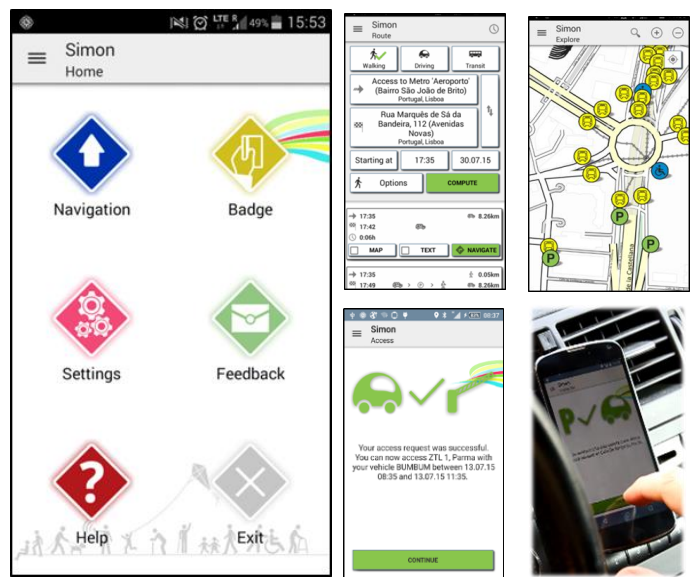
Transportation, mobility, accessibility and parking are extremely important matters for those with disabilities, specially in urban areas where they can find several problems.



SIMON is an EU-funded project initiative addressing innovative solutions to enhance the mobility experience for people with impairments. The project focuses on fighting against the fraud in the use of the Disabled Parking Card, providing a solution for the access-rights management, as well as on the use of the data sets available in the city (public transport, accessibility information, parking places) to provide a powerful tool to be used by mobility impaired citizens.

SIMON services and apps

SIMON Mobile is the app for the citizen. In combination with a new model of Disabled Parking Card users can authenticate themselves when parking or to access into restricted areas of the city. Moreover, this application offers several mobility services: plan routes using public and private transport, access to parking spaces, identify free/occupied parking spaces, information about accessibility and transport, etc.



SIMON Controls is the application for parking controllers, used for validating the correct use –or detect misuse- of reserved spots. The **Authority Operator tool** is a web-based application that allows the public authority to manage the Blue Badge schema and the operation interaction with SIMON. This includes getting information about the whole system and statistics of user activities.

Pilot tests in Madrid, Lisbon, Parma and Reading

SIMON applications and services are being tested at the cities of **Madrid, Lisbon, Parma and Reading**.

During 2015 a small scale pilot was carried out at each of the pilot sites with the collaboration of some selected users. A first prototype version of services and applications was available to be tested. Specific procedures were followed in order to assess about the users becoming familiar with the app, learning or understanding the main functionalities and detecting improvable elements.

During 2016 we will test, both in laboratory and real conditions, the different applications and services developed in the SIMON project. Disabled and elderly users can use a prototype of the Disabled Parking Card in combination with SIMON Mobile to park and access to restricted areas. Additionally SIMON Mobile app is available to any user to test the mobility and accessibility features.



How to participate?

If you live in Madrid, Lisbon, Parma or Reading, you can participate in the SIMON pilot test.

Get more information about the details for your specific city at:

<http://simon-project.eu/pilot-phase-pruebas-piloto-fase-sperimentale/>

Get SIMON Mobile

SIMON Mobile is freely available to those interested: mobility impaired people, associations, public entities, professionals and general public.

The app is currently available in English, Spanish, Italian and Portuguese for Android and iOS devices and can be downloaded from the Google Play Store or iTunes.



The link to the app is also available at the SIMON website: <http://simon-project.eu>

Users of Madrid, Lisbon, Parma and Reading can also request, via this website, to participate in the pilot tests with the new blue badge to test the validation functions.

Help us with the evaluation of Simon Mobile, **let us know what you think!**

More information

Visit our website: <http://simon-project.eu>



Follow us in **Facebook** and **Twitter**

• Twitter: <https://twitter.com/SIMONEUProject>

• Facebook: <https://www.facebook.com/SIMONSolution/>



SIMON Consortium



SIMON project is financially supported by the **European Commission** under the **Competitiveness and Innovation Framework Programme (CIP)**